

Astra Profile600IP

IP65 LED Moving Profile, with a 600W White source

ORDER CODE: **ASTRAPROFILE600IP**



The **Astra Profile600IP** is a bright, waterproofed (IP65) LED profile moving light, designed for any large-scale touring applications and exterior installations. Despite its waterproofed exterior, this unit is tremendous brightness and offers a superior evenness when comparing with other fixtures in the same class. Its light source delivers a pure white light emission at 6,500K, reaching 21,200 lumens whilst achieving a flat field beam projection. The **Astra Profile600IP**'s optical system moves linearly from 7° to 62°, and it's equipped with a brand-new 600W LED source. The extensive feature set of the Astra Profile600IP includes a 4-layer motorized framing system, linear CMY and CTO, 5,600K high CRI filter, colour and gobo wheels, frost filter, prism, and an iris.

MAIN FEATURES

- IP65 LED Moving Profile equipped with a 600W long life LED source (6,500K)
- 7° to 62° linear zoom
- 4-layer motorized framing shutters, Linear CMY+CTO, 5,600K high CRI filter, animation wheel, gobo and colour wheels, one frost filter, prism and iris

TECHNICAL SPECIFICATION

LIGHT SOURCE

- Source: 600 W White LED
- CCT: 6.500K
- Luminous flux: (7°) 14'877 lm - (62°) 21'200 lm
- Lux: (7°) 57'569 lx - (62°) 1'144 lx @5 m
- CRI: > 70 (CCT 5.600K and CRI > 90 with high CRI filter on color wheel)
- Source life expectancy: > 30.000 h

OPTICS

- Zoom: 7° - 62° motorised linear zoom
- Lens diameter: 160 mm
- Lens type: HD anti-reflection lenses with achromatic coating
- Focus: motorised

COLOUR SYSTEM

- Colour mixing: linear CMY
- CCT: linear CTO correction 2.700 K ~ 6.500 K
- Colour wheel: open + 5,600K high CRI filter + 6 colour filters

DYNAMIC EFFECTS

- Shutter system: 4 shutter blades with position and ±30° angle adjustment, ±45° rotation of the complete framing system
- Animation wheel: animation wheel with CW and CCW rotation
- Rotating gobos: 7 rotating gobos + open, interchangeable, indexing
- Gobo size: outer: 29,9 mm - image: 22 mm - thickness: up to 3 mm
- Circular prism: 4 f with bi-directional rotation, indexing
- Frost: linear 0 - 100% frost filter
- Iris: 5 - 100 % motorised iris

BODY

- Hardware on-board: sockets for quick-Lock Omega bracket (clamp not included)
- Pan angle: 540°
- Tilt angle: 270°
- Pan/Tilt resolution: bit 8 / 16-bit
- Feedback: automatic repositioning after accidental movement
- Body: weatherproof IP65 construction
- Body colour: black

ACCESSORIES & RELATED PRODUCTS

- **FCLASTRAP600IP** Flight case for 2 pcs of ASTRAPROFILE600IP
- **OSIP** IP65 quick-lock omega bracket compatible with IP65 moving heads
- **IPTESTBOX** Portable vacuum and pressure tester for ProLights IP fixtures
- **C6002B** Slim aluminum clamp, 200kg loading, 48-51mm tubes, M10 bolt, Black
- **9313FXWL03** Ass. 3x2.5mm TH07 cable, 16A 3p 230V CEE plug, SETSAC3FX socket, L.3 m
- **9333FXWL03** Ass. 3x2.5mm TH07 cable, SHUKO plug, SETSAC3FX socket, L.3m
- **RSR0670B** Steel security cable for hanging bodies, inox steel shackle, L=60 cm, black

CONTROL

- Protocols: DMX512, RDM, ArtNet, sACN, W-DMX + CRMX
- DMX channels: 29 / 39 / 54 channel
- Wireless Control: included, LumenRadio Timo Fx DMX/RDM compatible with both CRMX (Lumen Radio) and W-DMX (Wireless DMX)
- RDM: RDM for remote monitoring and settings
- Display: Graphic User Interface
- Firmware upgrade: yes, via USB - DMX interface (UPBOX2) not included
- Other: 16bit control of dimmer and colour

ELECTRONICS

- Dimmer: linear 0 ~ 100% electronic dimmer
- Dimmer curves: selectable dimming modes available
- Strobe / shutter: 1 - 30 Hz, electronic
- Display battery: self-charging battery backup
- Operating temperature: -20° ~ +45°
- LED Control: flicker free frequency with adjustable PWM
- Selectable PWM: 600 ~ 50.000 Hz

ELECTRICAL

- Mains power supply: 100-240V - 50/60Hz
- Max power consumption: 800 W
- Power factor: >0,97
- Inrush current: 240VAC/34.7A, 115VAC/18.4A

PHYSICAL

- IP rating: 65 for temporary outdoor use (*)
- Cooling: combination of heat pipe cooling system and low noise fan
- Suspension and fixing: any position with quick-lock omega brackets
- Pan / tilt lock: for transportation and maintenance
- Signal connection: IP65 Seetronic XLR 5p IN/OUT connectors
- Data connection: IP65 Art-Net RJ45 IN/OUT
- Power connection: Seetronic powerCON TRUE IP65 IN
- Dimensions (WxHxD): 454x730x334 mm
- Weight: 45,6 kg
- (*) NOTE: Suitable for permanent outdoor use, provided installation and maintenance cycles by qualified technicians are carried.

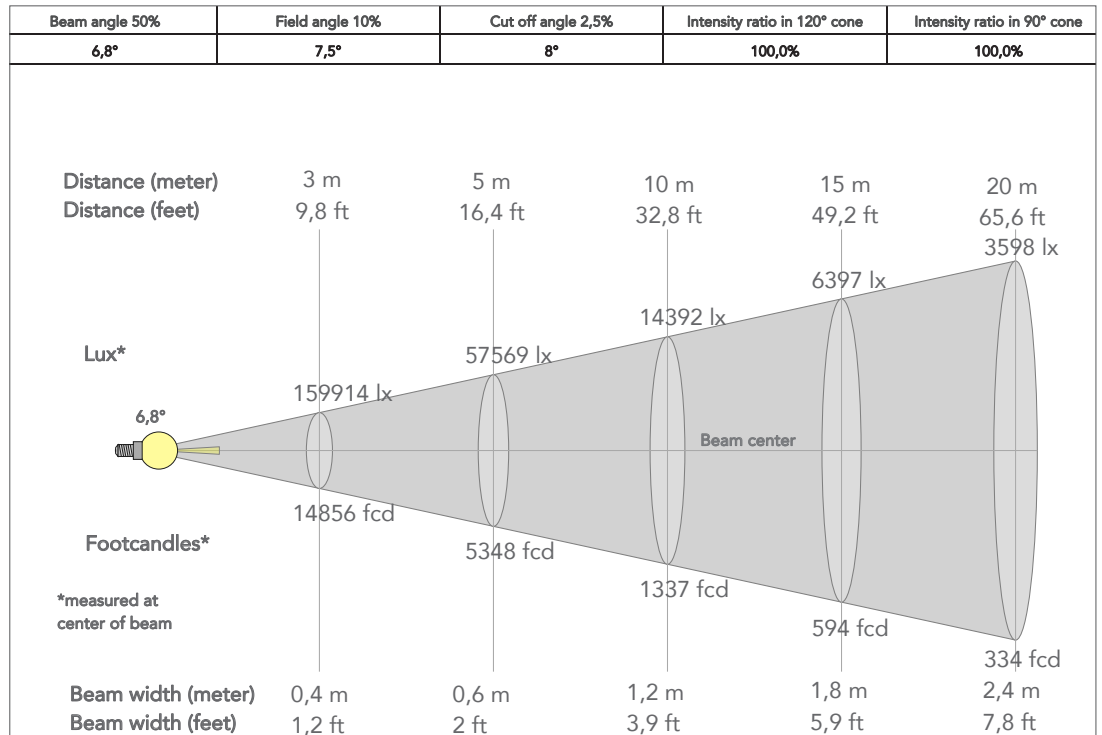
CERTIFICATIONS / APPROVALS

- Certifications / Approvals: CE, UKCA, RCM

- **938225L03** 3x2.5mm TH07 Cable, 16A SETSAC3MX, 16A SETSAC3FX, L. 3m
- **INF53415L03** Dmx cable HC5340. SETMC5MXXB XLR 5p->SETMC5FXXB XLR (f) 5p L.3m
- **WSBBF1G5** BlackBox F-1 G5 transmitter, 2,45GHz & 5.2/5,8 GHz, DMX/RDM, 512Ch
- **WSBBF1G6** BlackBox F-1 G6 transrec, 512ch, 2.45GHz, DMX&RDM, Bluetooth, G3, G4, G4S, G5, CRMX
- **WSBBR512G5** BlackBox R-512 G5 receiver 512Ch, 2.45GHz & 5.8GHz, DMX/RDM optional
- **WSBBR512G6** BlackBox R-512 G6 receiver 512Ch, 2.45GHz, DMX&RDM, Bluetooth, G3, G4, G4S, G5, CRMX
- **UPBOX2** Firmware uploader kit, USB IN, 3-pin XLR DMX OUT

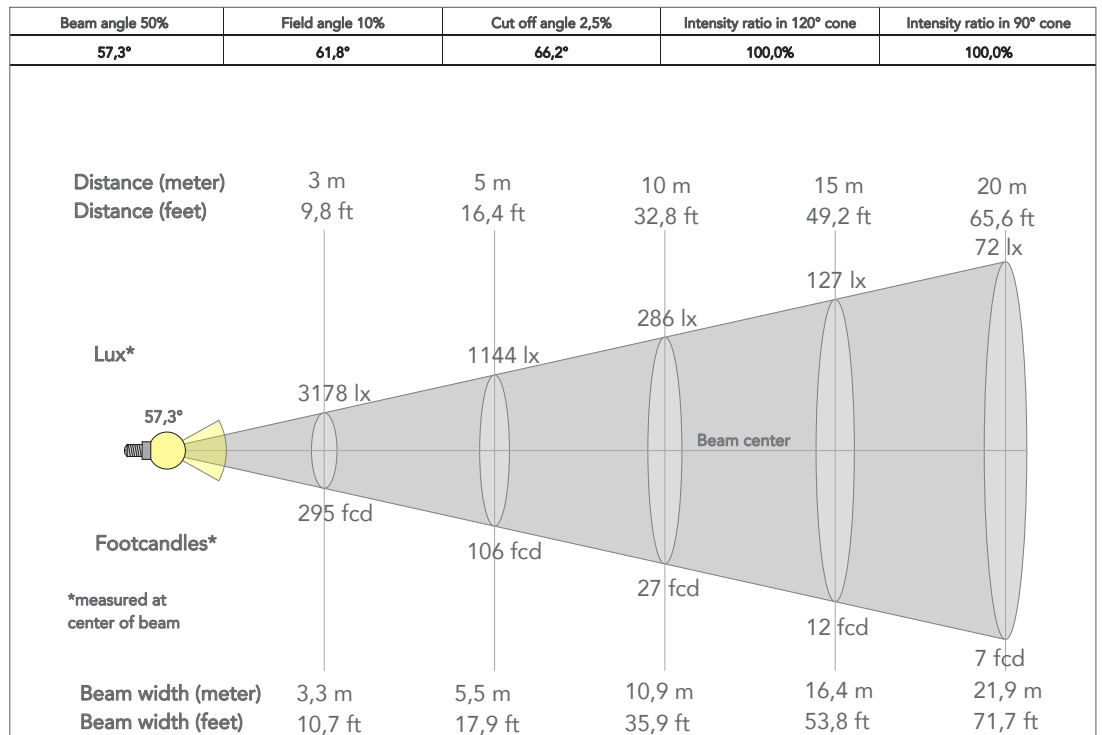
PRESET FULL ON

Beam angle 50%: 7°

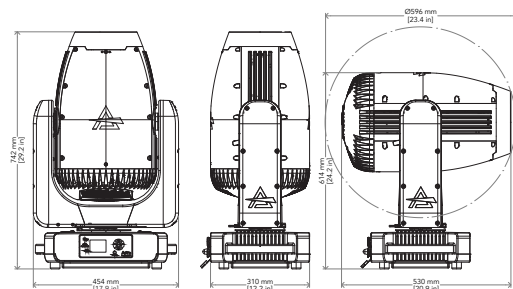


PRESET FULL ON

Beam angle 50%: 62°



TECHICAL DRAWINGS



CERTIFICATIONS / APPROVALS



Visit our website for specifications and tech documentations